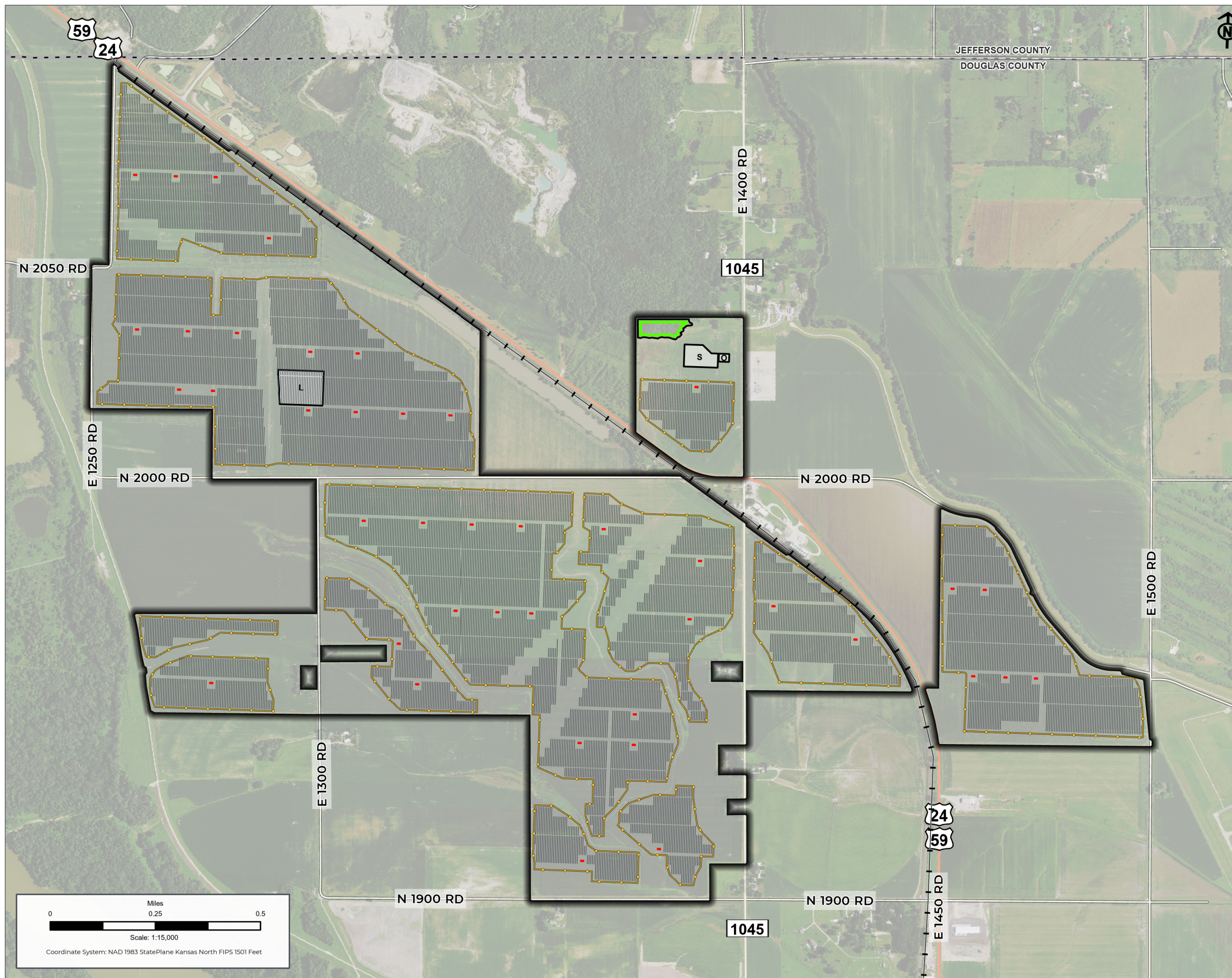


# ENVIRONMENTALLY SENSITIVE LANDS



## ENVIRONMENTALLY SENSITIVE LANDS STANDS OF MATURE TREES

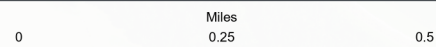
ORDINANCE: 12-314-2.02

- Stands of Mature Trees
- Kansas Sky Energy Center**
- Project Area
- Proposed Solar Array**
- Inverter
- Panel
- Project Facilities**
- S Substation
- L Temporary Laydown Yard
- O O&M
- Security Fence

PRELIMINARY DESIGN – NOT FOR CONSTRUCTION

<b>PROJECT:</b> KANSAS SKY ENERGY CENTER	
<b>DEVELOPER:</b> FREE STATE SOLAR PROJECT, LLC	<b>ENGINEER:</b>
<b>DATE:</b> 11/7/2023	<b>SCALE:</b> 1 INCH : 1,250 FEET
<b>NOTES:</b> <i>As defined in regulations; with priority to Heritage Woodlands (old growth forests)</i>	

**SHEET:**  
**STANDS OF MATURE TREES** **FIGURE: 05-G**



Scale: 1:15,000

Coordinate System: NAD 1983 StatePlane Kansas North FIPS 1501 Feet