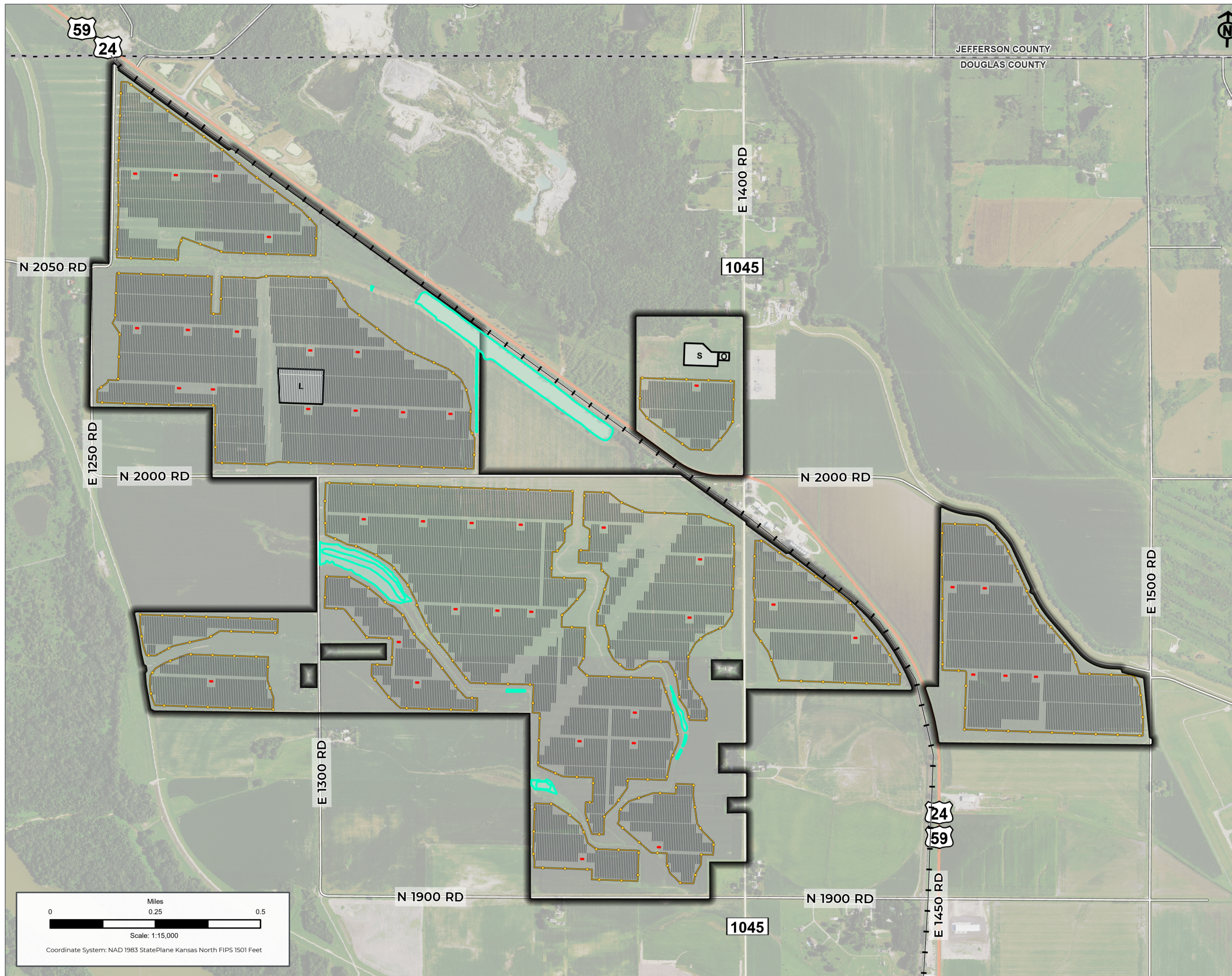


ENVIRONMENTALLY SENSITIVE LANDS



ENVIRONMENTALLY SENSITIVE LANDS JURISDICTIONAL WETLANDS

ORDINANCE: 12-314-2.02

Burns & McDonnell Field Survey

Field Delineated Wetland*

Kansas Sky Energy Center

Project Area

Proposed Solar Array

Inverter

Panel

Project Facilities

Substation

Temporary Laydown Yard

O&M

Security Fence

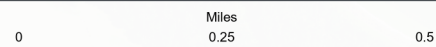
*Delineation was completed in accordance with the 1987 Corps of Engineers Wetlands Delineation Manual (1987 Manual) and the 2010 Regional Supplement to the Corps of Engineers Wetland Delineation Manual: Midwest Region – Version 2.0 (Regional Supplement).

Full report, dated September 1, 2022, provided with application.

PRELIMINARY DESIGN – NOT FOR CONSTRUCTION

PROJECT: KANSAS SKY ENERGY CENTER	
DEVELOPER: FREE STATE SOLAR PROJECT, LLC	ENGINEER:
DATE: 11/7/2023	SCALE: 1 INCH : 1,250 FEET
NOTES:	

SHEET:
JURISDICTIONAL WETLANDS **FIGURE: 05-C**



Scale: 1:15,000

Coordinate System: NAD 1983 StatePlane Kansas North FIPS 1501 Feet