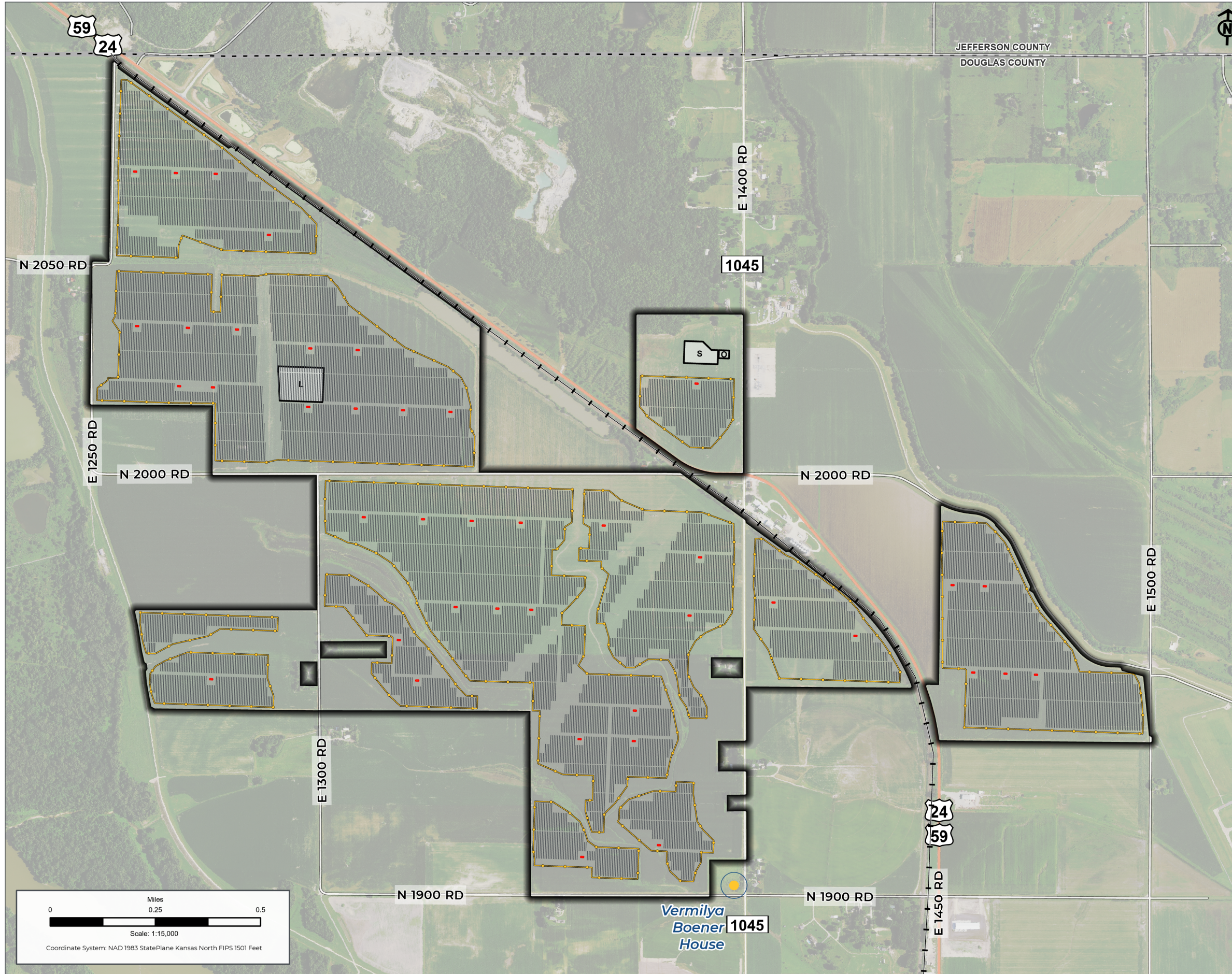


ENVIRONMENTALLY SENSITIVE LANDS



ENVIRONMENTALLY SENSITIVE LANDS SIGNIFICANT ARCHAEOLOGICAL AND HISTORIC SITES ORDINANCE: 12-314-2.02

Significant Archaeological and Historic Sites

National Register of Historic Places

Vermilya Boener House

Kansas Sky Energy Center

Project Area

Proposed Solar Array

Inverter

Panel

Project Facilities

Substation

Temporary Laydown Yard

O&M

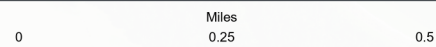
Security Fence

PRELIMINARY DESIGN – NOT FOR CONSTRUCTION

PROJECT: KANSAS SKY ENERGY CENTER	
DEVELOPER: FREE STATE SOLAR PROJECT, LLC	ENGINEER:
DATE: 11/7/2023	SCALE: 1 INCH : 1,250 FEET
NOTES:	

SHEET:
ARCH. AND HISTORIC SITES

FIGURE: 05-H



Scale: 1:15,000

Coordinate System: NAD 1983 StatePlane Kansas North FIPS 1501 Feet