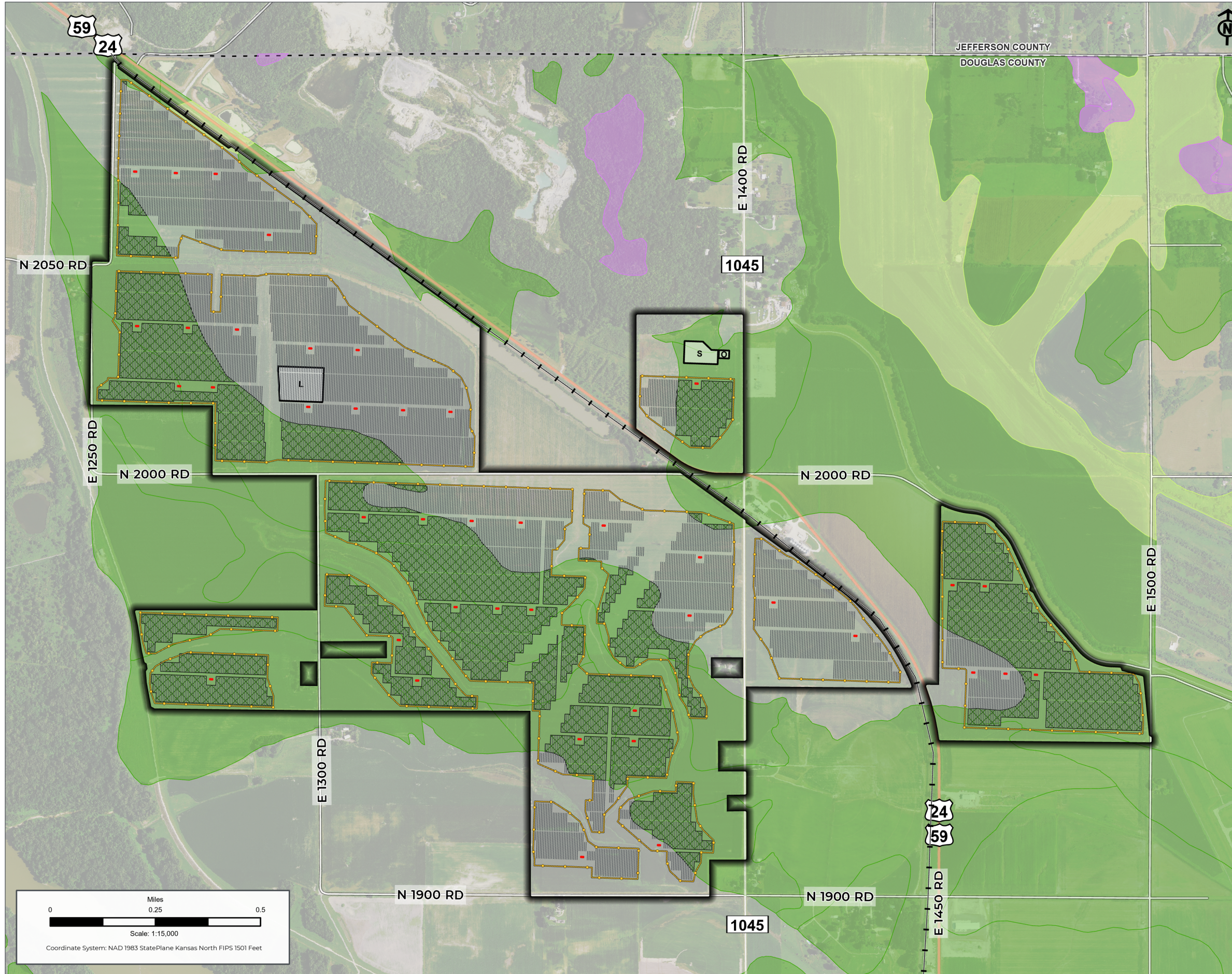


# ENVIRONMENTALLY SENSITIVE LANDS



## ENVIRONMENTALLY SENSITIVE LANDS PRIME FARMLAND

ORDINANCE: 12-314-2.02

### Prime Farmland

*Farmland Class (NRCS / SSURGO)*

- All areas are prime farmland
- Prime farmland if drained
- Farmland of statewide importance

### Kansas Sky Energy Center

- Project Area
- Prime Farmland within Site Area

### Proposed Solar Array

- Inverter
- Panel

### Project Facilities

- S Substation
- L Temporary Laydown Yard
- O O&M
- Security Fence

PRELIMINARY DESIGN – NOT FOR CONSTRUCTION

<b>PROJECT:</b> KANSAS SKY ENERGY CENTER	
<b>DEVELOPER:</b> FREE STATE SOLAR PROJECT, LLC	<b>ENGINEER:</b>
<b>DATE:</b> 11/7/2023	<b>SCALE:</b> 1 INCH : 1,250 FEET
<b>NOTES:</b>	

**SHEET:**  
PRIME FARMLAND

**FIGURE: 05-F**